

# WECORK

BEST IN NATURAL FLOORING™



*Sustainable*



*Healthy*



*Acoustic*



*Insulating*



*Comfortable*





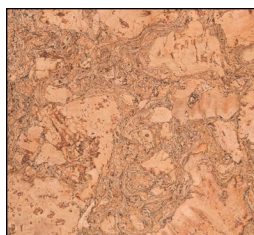


17.44 sf per carton  
 Dimensions: 35 9/16" x 11 7/8" x 7/16"  
 Finished with Greenshield, for light commercial or residential use

# *Avant Garde* Collection

## FLOATING FLOOR PLANKS

SARDINIA



BARCELONA



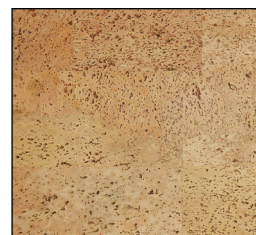
CANYON



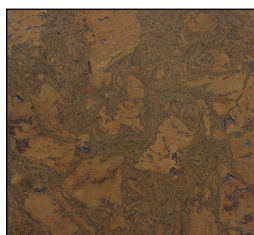
CASTLE TUSCANY



CLASSIC



MONTE CARLO



OLIVE BARCELONA



RENAISSANCE



RENAISSANCE EARTH



SADDLE MONTE CARLO



SARDINIA

### FLOATING OR GLUE-DOWN FLOORS?

Our easy-to-install cork floating floors feature a Uniclic locking mechanism to click planks or tiles together. Floating floors are best suited for light commercial or residential use, except for our commercial grade Serenity Collection.

Our glue down cork floors are available in tiles and rolls. In addition to residential use, they are great for commercial applications such as hospitals, restaurants and bars, libraries, churches, hotels and inns, universities, schools, retail and other.



WHITE CANYON



ZURICH



LIGHT SHADE

Dimensions: 12" x 12", 12" x 24", and 24" x 24"

Thicknesses: 3/16", 1/4", 5/16"

Special orders: 1/2" tiles and various plank formats;  
minimum of 3,000 sf, 12-16 week lead time

Unfinished or with Greenshield, for full commercial  
or residential use

## *Classic* Collection

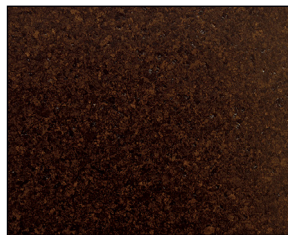
GLUE-DOWN TILES



LIGHT SHADE



MEDIUM SHADE



DARK SHADE

**CUSTOM DIMENSIONS AVAILABLE  
FOR SPECIAL ORDERS**

Installed since the 1970's, tiles  
come unfinished or finished.  
Shades have a natural range of  
color, but can be stained for  
more uniform color.



ASH

20.34 sf per carton

Dimensions: 35 2/5" x 11 4/5" x 3/8"

Finished with Greenshield, for light  
commercial or residential use

## *Eco-Nomical* Collection

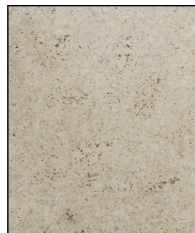
FLOATING FLOOR PLANKS



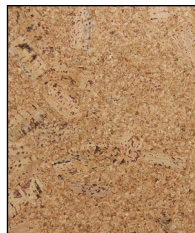
ASH



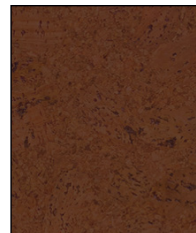
EARTH



IVORY



NATURAL



SABLE



WHITE



## CANYON FR

COMMERCIAL GRADE -  
FADE, SCRATCH & WATER RESISTANT

High definition cork, wood, or stone visuals are digitally printed on a high density cork substrate. Comes with a patented hot coating and has an AC5 / Class 33 wear rating, for full commercial or residential use.

Planks: 20.24 sf per carton

Dimensions: 48 5/8" x 12 1/64" x 7/16"

Planks FR: 18.08 sf per carton

Dimensions: 36" x 12" x 7/16"

Tiles: 18.08 sf per carton

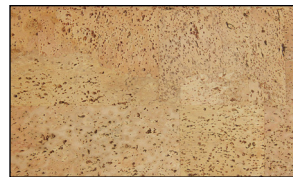
Dimensions: 24 13/32" x 17 23/32" x 7/16"

# Serenity Collection

FLOATING FLOOR PLANKS & TILES



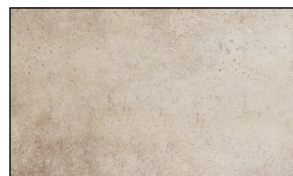
CANYON FR



MONTE CARLO FR



HEARTH SLATE (TILE)



SANDSTORM (TILE)



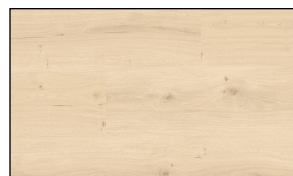
BLOND FRENCH OAK



FRENCH AUTUMN OAK



RED OAK



SUNRISE OAK



SUNSET ACACIA



SANDSTORM

SUNSET ACACIA



PEAR



82.88 sf per roll

Dimensions: 18' x 55" x 1/8"

Comes unfinished and can be stained to any color,  
for full commercial or residential use.



## *Corkoleum* Collection

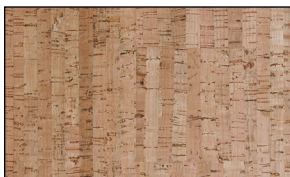
GLUE-DOWN ROLLS



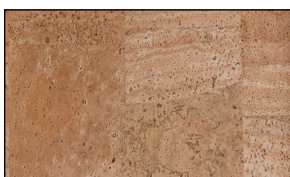
FIG



GRIT



LEMON



PEAR

### **THE WATER-RESISTANT CORK FLOORING IN A ROLL!**

Corkoleum features a top layer of decorative cork, underneath which is a thin layer of polyurethane (PU) backed by a composite of cork and recycled rubber. A uniquely versatile product, Corkoleum can be used for living rooms, bedrooms, bathrooms, kitchens, libraries, physiotherapy rooms and gyms. Other creative applications include boats, RVs, custom jets, buses, staircases, walls, dividers, counter tops and more!





# Floating Floor Specifications

SPECIFICATION	SERENITY	AVANT GARDE & ECO-NOMICAL
Dimensions (EN 427)	620 mm x 450 mm 915 mm x 305 mm 1235 mm x 305 mm	900 mm x 300 mm
Thickness (EN 428)	11 mm	10 mm - 11 mm
Weight (EN430)	8.9 Kg/m <sup>2</sup>	8 Kg/m <sup>2</sup>
Classification (EN 16511) - Domestic/Commercial	23 / 33	23 / 31
Dimensional Stability (EN 434)	< 0.05 %	0.10%
Impact Resistance (EN 438-2 / EN 13329)	2000 / 14 mm / Class 33	4 N / Grade 3
Residual Indentation (EN 433 / EN ISO 24343-1)	0.15 mm	0.13 mm
Fire Resistance (EN ISO 9239-1 / DIN EN 13501)	Cfl s1	Cfl s1
Thermal Resistance (EN 12524 / EN 12667)	0.108 m <sup>2</sup> K/W	0.1 m <sup>2</sup> K/W
Impact Sound Reduction (EN ISO 717-2 / EN 140)	18 dB	17 dB - 19 dB
Lightfast (ISO 105)	> 7	
Abrasion Resistance (EN 14354 & EN 13329)	AC5	
Certification / Verification	EPD (Env. Product Declaration)	Greenguard Gold



## 100% RAPIDLY RENEWABLE

The premium cork used in our products comes from the bark of cork oak trees grown in Portugal and the Mediterranean region. Trees remain unharmed when their bark is harvested, and consume up to five times as much CO<sup>2</sup> during the nine years it takes them to regenerate their bark!



Serenity



Avant Garde, Eco-Nomical

SEE IN  
YOUR  
ROOM



SCAN  
NOW TO  
VISUALIZE